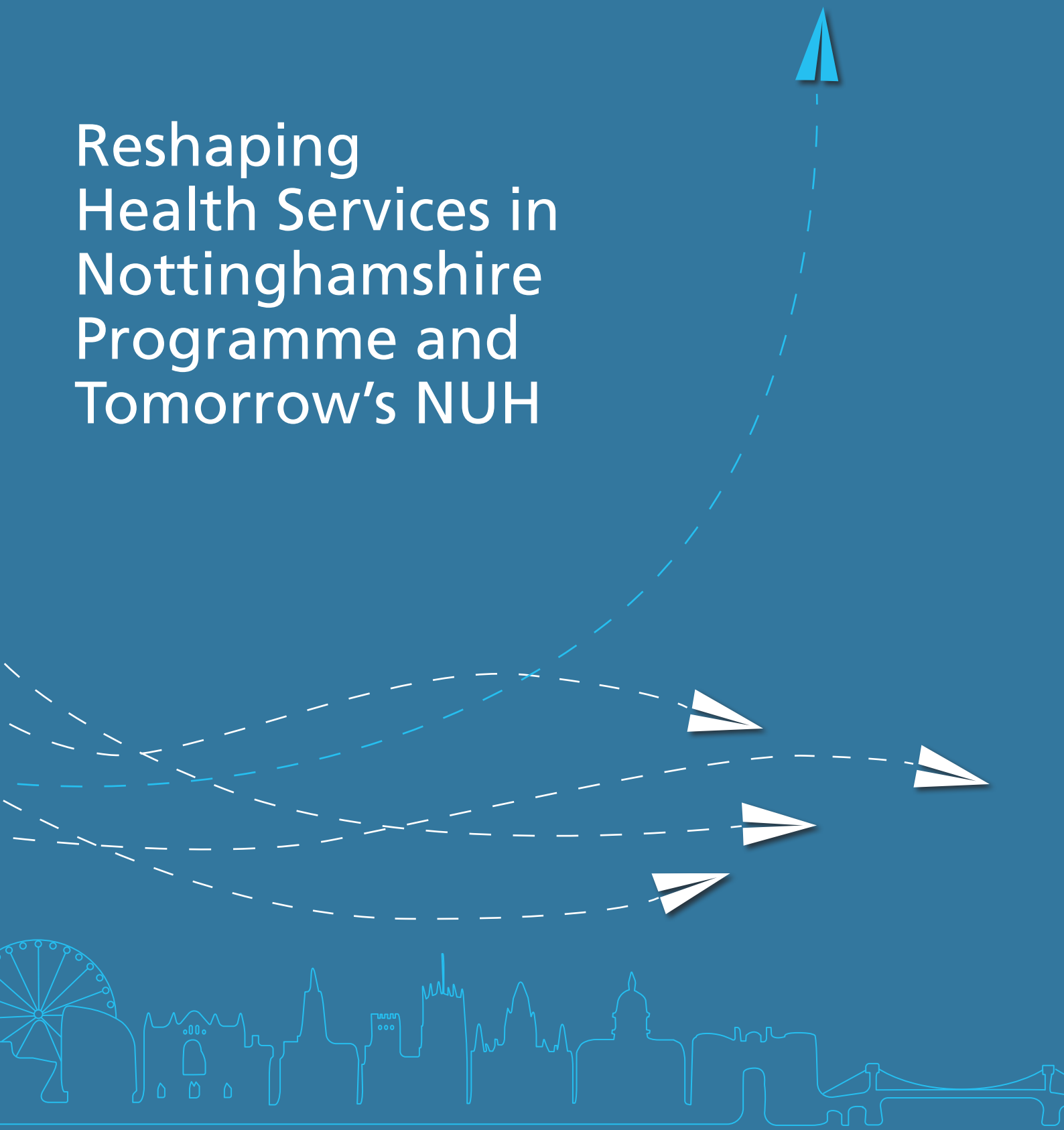


# Reshaping Health Services in Nottinghamshire Programme and Tomorrow's NUH





### What are we asking you about?

We are undertaking a two-month phase of public engagement on proposals to transform hospital services in Nottingham. These proposals are part of what we are calling Reshaping Health Services in Nottinghamshire. This plan aims to secure Government funding to invest in our local health services so that they are better set up to meet people's needs and improve people's health and wellbeing.

The part of the plan we are asking the public to comment on is called Tomorrow's NUH, which is focused on improving local hospital services.

### Why are we doing this?

We want to transform health and care services so that people living in our area live longer, healthier and happier lives.

The two large hospital sites that currently exist, Nottingham City Hospital and Queens Medical Centre (QMC), were designed at a different time to care for fewer patients with different needs to patients today. Our vision for hospital services in the future is set out below, including what this will mean for local people. Our hospital services aren't currently set up in the right way for us to achieve this ambition. That is why we want to secure Government funding to invest in local services, facilities and buildings.

Nottingham and Nottinghamshire has already been earmarked as an area that can be allocated significant additional funding for hospital services. To secure this funding we need to show that we have a plan for how we will use it to improve the health and wellbeing of local people. To do this we need to set out our case for change. We are talking to people about what those changes might look like and what they might mean for local people.





### What are we talking to local people about?

Over the coming months, we will be talking to patients, carers and families who may be affected by the changes we want to make. This public engagement is supported by Healthwatch and endorsed by our local health and care organisations. We will be holding a series of events, discussion groups and a survey to share our ideas and gather views on:



This is very much the start of a conversation. We will consider the feedback from patients, carers and the public alongside clinical and financial considerations before developing a final set of options and proposals. These options will form part of a public consultation next year.



## Our plans

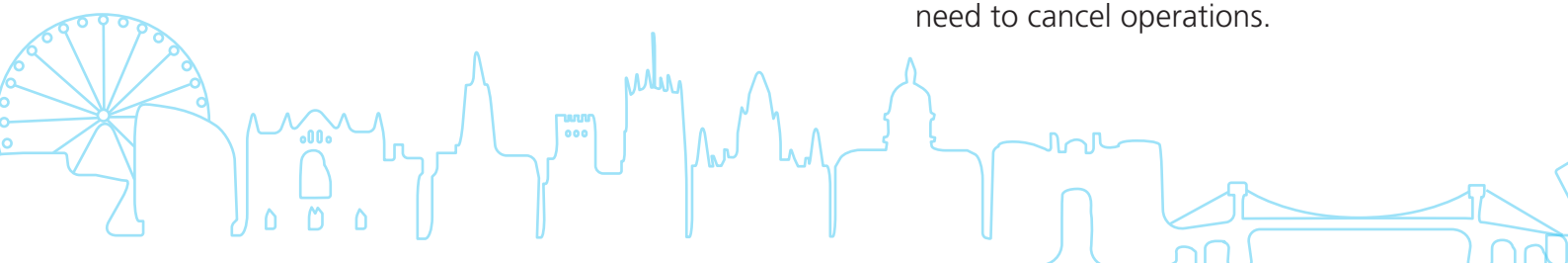
### Hospital services

#### What do we want to do

- More specialist services and more routine services in communities near to where people live.
- More routine services remotely, using phone calls and digital technology.
- Create modern hospitals with the best possible facilities.
- Relocate some services so that patients who need access to emergency or specialist care can get it quickly and safely. Services currently provided over two or more sites would be provided at one only, but the the care would be better.
- Separate our elective care services (planned operations like new hips, knees and cataract surgery) from our emergency care services so that pressure on emergency services doesn't result in cancelled operations.

#### What could this mean to you

- People would come to hospital less frequently and only if they required specialist care – for example emergency support, inpatient beds or operating theatres. The care people need in between their hospital appointments may happen in a local community setting or over the phone.
- Some of the services currently provided in hospital would be provided in a community setting or remotely - this would mean most people have less far to travel for routine care such as follow up appointments for ongoing health problems.
- Our hospital buildings and facilities would be more up-to-date and provide better care.
- We would provide all of our acute maternity services on one site, so that they are co-located with emergency and specialist services.
- All our emergency care services would be on one site, providing access to specialist services that patients may need without having to travel between sites by ambulance.
- Planned operations would take place in a dedicated centre, separate from our emergency care services. This would protect planned operations from pressures in emergency care, where admissions to hospital through A&E often mean that we need to cancel operations.





### How can I have my say?

We have a series of engagement opportunities offering opportunities for the public to give their views find out more and ask questions.

Complete the online survey at:

<https://www.surveymonkey.co.uk/r/RHSNtnuh2020>

To request a paper copy of the questionnaire, or if you have any other queries regarding this engagement exercise, please email [NECSU.engagement@nhs.net](mailto:NECSU.engagement@nhs.net) or call 0115 971 3592.



### Public engagement events

To hear first-hand from clinical leaders, register to attend one of the following virtual events.

Event	Dates	Times	Register to attend
1	Tuesday 8 December	2.30-3.30pm	<a href="http://RHSNengagement.eventbrite.com">http://RHSNengagement.eventbrite.com</a>
2	Tuesday 8 December	6-7pm	<a href="http://RHSNengagement.eventbrite.com">http://RHSNengagement.eventbrite.com</a>
3	Friday 11 December	10-11am	<a href="http://RHSNengagement.eventbrite.com">http://RHSNengagement.eventbrite.com</a>

### Join a discussion group

We will also be running a series of discussion groups to explore the issues raised in the proposals in further detail. Simply email us to book your place on a discussion group.

Focus groups	Dates	Time	Register to attend
Group 1	9 December 2020	11am-12pm	
Group 2	10 December 2020	10-11am	
Group 3	10 December 2020	2-3pm	

These virtual events will take place via Microsoft Teams and joining instructions will be shared once you have registered.

Visit our website: <https://nottscg.nhs.uk/RHSN/>

Call: **0115 971 3592**

Email: [NECSU.engagement@nhs.net](mailto:NECSU.engagement@nhs.net)



Contact us

Please call us on: **0115 971 3592.**

Email: **[NECSU.engagement@nhs.net](mailto:NECSU.engagement@nhs.net)**

To request this document in an alternative format  
please contact us using the details above.

